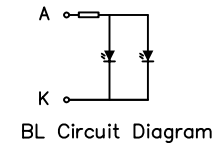
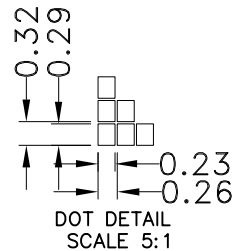
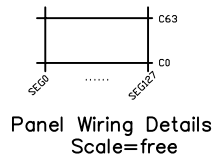


PIN	SYMBOL
1	NC
2	NC
3	H+
4	H-
5	LEDA
6	VSS
7	VDD
8	SCLK
9	SDA
10	RS
11	RESET
12	CS



*1. LCD Display Type	FSTN,Transflective,Positive		
*2. Viewing Direction	6H	*6. Storage Temp	-40°C~80°C
*3. LCD Driver Mode	1/64Duty,1/9Bias	*7. Driver IC	ST7567
*4. Operating Voltage	3.3V	*8. Backlight	WHITE VF=3.3V If=30mA
*5. Operating Temp	-40°C~70°C(With 5v Heater)	*9. ROHS	

# HOT DISPLAY

Dwg Title: HTM12864C-31W-N3S-V06			
EDC No:		Ver: A/0	
Scale 1:1	Unit mm	Tol. ±0.3	
Drawn	Checked	Date: 2019-01-15	